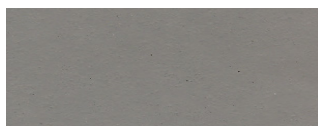


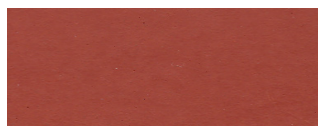
Flowfresh MF



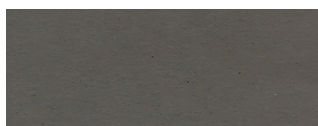
Standard Color Chart



Mid Gray



Red



Dark Gray



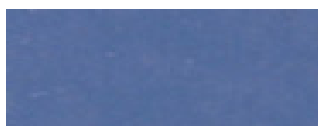
Khaki



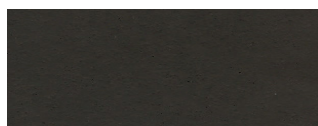
Green



Cream



Blue



Black

The applied colors may differ slightly from the examples shown above. Contact our customer services for a true color sample or a special color match.

Description

Flowfresh MF is a slurry applied, self-leveling, heavy duty, chemical resistant, antimicrobial treated cementitious urethane flooring system. It provides a durable and smooth floor finish, resistant to thermal shock and moisture vapor transmission.

Flowfresh MF is based on over 30 years of polyurethane flooring technology.

Uses

Flowfresh MF is ideal for dry processing zones such as packaging areas, as well as bakeries.

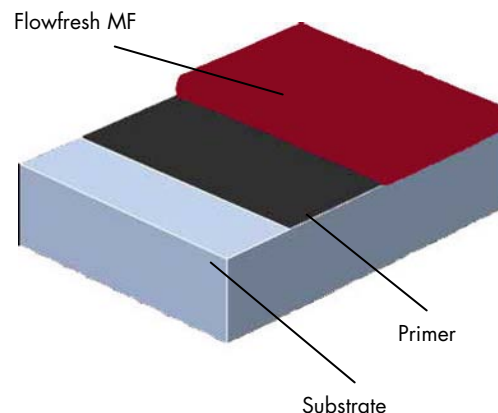
Benefits

- Contains Polygiene® antimicrobial additive
- Ease of application
- Very high chemical resistance
- Easy to clean and sterilize, minimal joints
- High heat resistant to 200°F
- Non-tainting, non-dusting
- High abrasion resistance
- Withstands high mechanical stress
- Low odor during application

Project References

Dreyer's Grand Ice Cream, Otis Spunkmeyer, Coca Cola, Columbus Salami, Bimbo Bakeries, Kapcsándy Family Winery, HEB Foods, Panera Bread, Mrs. Baird's Bread.

System Design



Model Specification

Product: Flowfresh MF

Finish: Matte

Preparatory work and application in accordance with supplier's instructions.

Supplier: Flowcrete North America, Inc.

Telephone: Customer Service 936 539 6700

Substrate Requirements

Concrete or screed substrate should have a minimum of 3,625 psi compressive strength, free from laitance, dust and other contamination. The substrate should be dry to ASTM requirements and free from excessive moisture vapor transmission.

Products Included in this System

Primer: Flowprime @ 200 sq ft/ gal

OR, where high heat resistance is critical,
Flowfresh FC @ 150 sq ft/ unit

Topping: Flowfresh MF – 40lb unit

- 22 sq ft/unit @ 3/16"
- 17 sq ft/unit @ 1/4"

Flowfresh MF is a self-sealing finish.

Detailed application instructions are available upon request

*Under certain conditions Flowfresh MF may be applied thinner than 3/16". Please consult our Technical Advisory Team for more information.

**Coverages listed are theoretical, actual coverages may vary based on substrate and site variations.

***Flowfresh can also be used as slurry for slip resistant systems. Please consult our Technical Advisory Team for more information.

Flooring Design Service

Special corporate colors and designs can be produced to special order.

Color Stability

Flowfresh MF is not color fast and may change color over time (exhibits a yellowing effect). Color change depends on the UV light and heat levels present and hence, the rate of change cannot be predicted. This is more noticeable in light colors and grays, but does not compromise the product's chemical resistance or physical resistance characteristics.

Polygiene: Microbial & Fungal Resistance

All Flowfresh products include a built in high performance anti-microbial, Polygiene. This silver-based additive inhibits the growth of bacteria and molds and guards against product degradation and odors caused by these microorganisms. Detailed anti-microbial information and test results are available upon request.

Technical Information

The figures that follow are typical properties achieved in laboratory tests at 70°F and at 50% Relative Humidity.

Compressive Strength	>7,250 psi	(ASTM C 579)
Tensile Strength	1,740 psi	(ASTM C 307)
Coefficient of Thermal Expansion	2.2 x 10 ⁻⁵ in/in/°F	(ASTM C 531)
Impact Resistance	No visible damage or deterioration at minimum 160 in-lb	
Flexural Strength	2,900 psi	(ASTM C 580)
Modulus of Elasticity	1.7 x 10 ⁵	(ASTM C 469)
Water Absorption	< 0.1%	
Abrasion Resistance	0.07 g loss	(ASTM D 4060)
	CS-17 Wheel, 1,000 cycles	
Adhesion	400 psi	(ASTM D 4541)
	100% concrete failure	
Chemical Resistance	Excellent resistance to sugars and most acids (organic and inorganic) Contact Flowcrete North America Inc. for chemical resistance chart	
VOC	8 g/l	

Aftercare - Cleaning and Maintenance

Clean regularly using a single or double headed rotary scrubber drier in conjunction with a mildly alkaline detergent.

Installation Service

The installation should be carried out by a Flowcrete preferred contractor with a documented quality assurance program. Obtain details of our preferred contractors by contacting our customer service team or enquiring via our web site www.flowcreteamericas.com

Environmental Considerations

The finished system is assessed as non-hazardous to health and the environment. The long service life and seamless surface reduce the need for repairs, maintenance and cleaning. Environmental and health considerations are controlled during manufacture and application of the products by Flowcrete staff and fully trained and experienced contractors.

Important Note - Warranty

Flowcrete's products are guaranteed against defective materials and manufacture and are sold subject to our standard Warranty, Terms and Conditions of Sale, copies of which can be obtained on request. Warranty does not cover suitability, fit for purpose or any consequential or related damages. Please review warranty in detail before using products.

Further Information

If you would like additional information please consult our Technical Advisory Team at the number listed below or visit our website to register your interest in specifying a Flowcrete flooring system.

Disclaimer: Any recommendation or suggestion relating to the use of the products made by Flowcrete North America, Inc., whether in its technical literature, or in response to a specific enquiry, or otherwise, is based upon data believed to be reliable, however the products and information are intended for use by Customers having requisite skill and know-how in the industry and therefore it is for the Customer to satisfy itself of the suitability of the products for its own particular use and it shall be deemed that the Customer has done so at its sole discretion and risk.



Flowcrete North America, Inc.
11133 I-45 South, Suite K
Conroe, Texas 77302
Tel: 936 539 6700 Fax: 936 539 6701
Email: usa@flowcrete.com
Flowcrete North America, Inc. is an RPM company

www.flowcreteamericas.com