

## Flowfresh HF



### Standard Color Chart



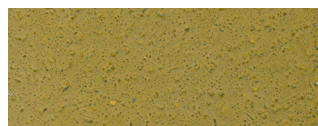
Mid Gray



Red



Dark Gray



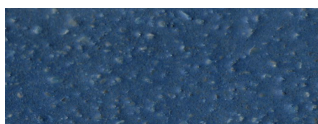
Khaki



Green



Cream



Blue



Black

The applied colors may differ slightly from the examples shown above. Contact our customer services for a true color sample or a special color.

### Description

Flowfresh HF is a trowel applied, heavy duty, chemical resistant, antimicrobial treated cementitious urethane mortar floor topping. It provides a durable and fine textured floor finish, resistant to thermal shock and moisture vapor transmission.

Flowfresh HF is based on over 30 years of polyurethane flooring technology.

### Uses

Flowfresh HF is ideal for wet processing zones such as food manufacturing and food preparation areas, as well as chemical processing plants.

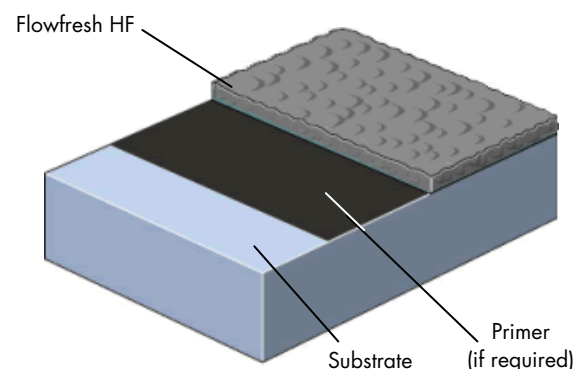
### Benefits

- Contains Polygiene® antimicrobial additive
- Very high chemical resistance
- Easy to clean and sterilize, minimal joints
- Anti-slip surface
- Heat resistant to 250 °F
- Steam cleanable
- Non-tainting, non-dusting
- High abrasion resistance
- Withstands high mechanical stress
- Good alternative to expensive acid tiles
- Low odor during application
- Positive slip resistance
- Unaffected by moisture vapor
- Can be applied to new concrete after 7-10 days

### Project References

Heinz, HEB Foods, Kraft Foods, Nestlé, Kellogg's, Coors Brewing, Cargill, Sam Adams Brewery, Dannon, Coca Cola, Smuckers.

### System Design



## Model Specification

Product: Flowfresh HF

Finish: Matte

Preparatory work and application in accordance with suppliers instructions.

Supplier: Flowcrete North America, Inc.

Telephone: Customer Service 936 539 6700

## Substrate Requirements

Concrete or screed substrate should have a minimum of 3,625 psi compressive strength, free from laitance, dust and other contamination. The substrate should be dry to ASTM requirements and free from excessive moisture vapor transmission.

## Products Included in this System

**Topping:** Flowfresh HF - 66lb unit

- 24 sq ft/unit @ 1/4"
- 17 sq ft/unit @ 3/8"

Flowfresh HF is a self-sealing finish.

Detailed application instructions are available upon request.

\*Coverages listed are theoretical, actual coverages may vary based on substrate and site variations.

## Primer

Under certain conditions, out-gassing of the concrete may cause surface defects in the finished Flowfresh topping and priming of the concrete surface may be required. Install a test patch in the area of concrete to determine if priming is necessary.

## Flooring Design Service

Special corporate colors and designs can be produced to special order.

## Installation Service

The installation should be carried out by a Flowcrete preferred contractor with a documented quality assurance scheme. Obtain details of our preferred contractors by contacting our customer service team or enquiring via our web site [www.flowcreteamericas.com](http://www.flowcreteamericas.com)

## Color Stability

Flowfresh HF is not color fast and may change color over time (exhibits a yellowing effect). Color change depends on the UV light and heat levels present and hence, the rate of change cannot be predicted. This is more noticeable in light colors and grays, but does not compromise the product's chemical resistance or physical characteristics.

## Polygiene: Microbial & Fungal Resistance

All Flowfresh products include a built in high performance anti-microbial, Polygiene. This silver-based additive inhibits the growth of bacteria and molds and guards against product degradation and odors caused by these microorganisms. Detailed anti-microbial information and test results are available upon request.

## Technical Information

The figures that follow are typical properties achieved in laboratory tests at 68°F and at 50% Relative Humidity.

<b>Compressive Strength</b>	8,000 psi (ASTM C 579)
<b>Tensile Strength</b>	1,450 psi (ASTM C 307)
<b>Coefficient of Thermal Expansion</b>	1.1 x 10 <sup>-5</sup> in/in/°F (ASTM C 531)
<b>Impact Resistance</b>	No visible damage or deterioration at minimum 160 in-lb
<b>Flexural Strength</b>	2,900 psi (ASTM C 580)
<b>Modulus of Elasticity</b>	1.7 x 10 <sup>5</sup> (ASTM C 469)
<b>Water Absorption</b>	< 0.1%
<b>Abrasion Resistance</b>	0.05 g loss (ASTM D 4060) CS-17 Wheel, 1,000 cycles
<b>Adhesion</b>	400 psi (ASTM D 4541) 100% concrete failure
<b>Coefficient of Friction</b>	Passes ADA recommendations (ASTM D 2047)
<b>Heat Resistance</b>	220 °F (continuous exposure)
<b>Limitation</b>	250 °F (intermittent spills)
<b>Chemical Resistance</b>	Excellent resistance to sugars and most acids (organic and inorganic) Contact Flowcrete North America Inc. for chemical resistance chart.
<b>VOC</b>	5 g/l

## Aftercare - Cleaning and Maintenance

Clean regularly using a rotary scrubber drier in conjunction with a mildly alkaline detergent.

## Environmental Considerations

The finished system is assessed as non-hazardous to health and the environment. The long service life and seamless surface reduce the need for repairs, maintenance and cleaning. Environmental and health considerations are controlled during manufacture and application of the products by Flowcrete staff and fully trained and experienced contractors.

## Important Note - Warranty

Flowcrete's products are guaranteed against defective materials and manufacture and are sold subject to our standard Warranty, Terms and Conditions of Sale, copies of which can be obtained on request. Warranty does not cover suitability, fit for purpose or any consequential or related damages. Please review warranty in detail before using products.

## Further Information

If you would like additional information please consult our Technical Advisory Team at the number listed below or visit our website to register your interest in specifying a Flowcrete flooring system.

**Disclaimer:** Any recommendation or suggestion relating to the use of the products made by Flowcrete North America, Inc., whether in its technical literature, or in response to a specific enquiry, or otherwise, is based upon data believed to be reliable, however the products and information are intended for use by Customers having requisite skill and know-how in the industry and therefore it is for the Customer to satisfy itself of the suitability of the products for its own particular use and it shall be deemed that the Customer has done so at its sole discretion and risk.



Flowcrete North America, Inc.  
11133 I-45 South, Suite K  
Conroe, Texas 77302  
Tel: 936 539 6700 Fax: 936 539 6701  
Email: [usa@flowcrete.com](mailto:usa@flowcrete.com)  
Flowcrete North America, Inc. is an RPM company

[www.flowcreteamericas.com](http://www.flowcreteamericas.com)