



Flowfresh CM



Standard Color Chart



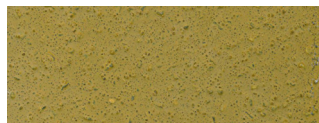
Mid Gray



Red



Dark Gray



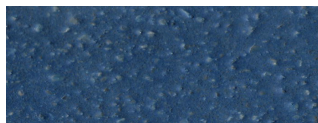
Khaki



Green



Cream



Blue



Black

The applied colors may differ slightly from the examples shown above. Contact our customer services for a true color sample or a special color.

Description

Flowfresh CM is a trowel applied, antimicrobial treated cementitious urethane cove base mortar. It provides a durable finish and comes in a variety of colors.

Flowfresh CM has been designed to complement the Flowfresh antimicrobial flooring systems.

Flowfresh CM is based on over 30 years of polyurethane flooring technology.

Uses

Flowfresh CM provides a heavy duty, thermal shock resistant seal at the joint between the floor and the wall to enhance Flowfresh flooring systems (HF, RT, SR, MF, SLB).

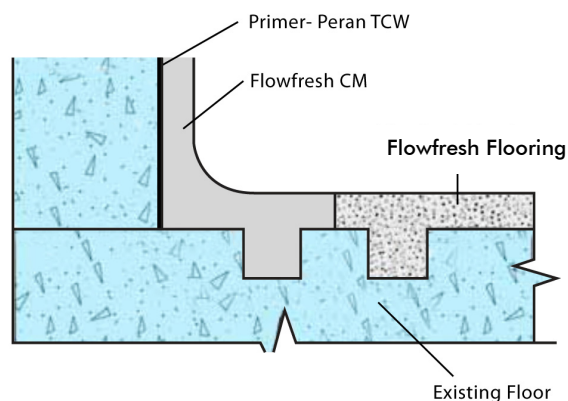
Benefits

- Contains Polygiene® antimicrobial additive
- Very high chemical resistance
- Easy to clean and sterilize, minimal joints
- Steam cleanable
- Non-tainting, non-dusting
- Withstands high mechanical stress
- Low odor during application

Project References

Smuckers, HEB Foods, Coca Cola, Red Engine Foods, Del Monte, Farmland Foods, Fiesta Foods, Highland Dairy, Heinz, Bacardi Bottling, Sam Adams Brewery.

System Design



Model Specification

Product: Flowfresh CM

Finish: Matte

Preparatory work and application in accordance with suppliers instructions.

Supplier: Flowcrete North America, Inc.

Telephone : Customer Service 936 539 6700

Substrate Requirements

Concrete or screed substrate should have a minimum of 3,625 psi compressive strength, free from laitance, dust and other contamination. The substrate should be dry to ASTM requirements and free from excessive moisture vapor transmission.

Products Included in this System

Primer: Peran TCW @ 150 sq ft/ gal

Flowfresh CM – 31.5 lb unit

- 11 sq ft/unit @ 3/16"
- 33 linear ft/unit at 4" high, @ 3/16"

Flowfresh CM is a self-sealing finish.

Detailed application instructions are available upon request.

*Coverages listed are theoretical, actual coverages may vary based on substrate and site variations.

Flooring Design Service

Special corporate colors and designs can be produced to special order.

Installation Service

The installation should be carried out by a Flowcrete preferred contractor with a documented quality assurance program.

Obtain details of our preferred contractors by contacting our customer service team or enquiring via our web site www.flowcreteamericas.com

Color Stability

Flowfresh CM is not color fast and may change color over time (exhibits a yellowing effect). Color change depends on the UV light and heat levels present and hence, the rate of change cannot be predicted. This is more noticeable in light colors and grays, but does not compromise the product's chemical resistance or physical characteristics.

Polygiene: Microbial & Fungal Resistance

All Flowfresh products include a built in high performance anti-microbial, Polygiene. This silver-based additive inhibits the growth of bacteria and molds and guards against product degradation and odors caused by these microorganisms.

Detailed anti-microbial information and test results are available upon request.

Technical Information

The figures that follow are typical properties achieved in laboratory tests at 70°F and at 50% Relative Humidity.

Compressive Strength	8,000 psi (ASTM C 579)
Tensile Strength	1,450 psi (ASTM C 307)
Coefficient of Thermal Expansion	1.1 x 10 ⁻⁵ in/in/°F (ASTM C 531)
Water Absorption	< 0.1%
Adhesion	400 psi (ASTM D-4541)
Flexural Strength	2,900 psi (ASTM C 580)
Abrasion Resistance	0.079 g loss (ASTM D 4060) CS-17 Wheel, 1,000 cycles
Chemical Resistance	Excellent resistance to sugars and most acids (organic and inorganic) Contact Flowcrete North America Inc. for chemical resistance chart
VOC	5 g/l

Aftercare - Cleaning and Maintenance

Clean regularly using a rotary scrubber drier in conjunction with a mildly alkaline detergent.

Environmental Considerations

The finished system is assessed as non-hazardous to health and the environment. Flowfresh CM is a solvent free product. Follow the appropriate Occupational Health and Safety guidelines applicable to the location where the application is undertaken. For more information, please refer to the safety datasheets for the individual components

Important Note - Warranty

Flowcrete's products are guaranteed against defective materials and manufacture and are sold subject to our standard Warranty, Terms and Conditions of Sale, copies of which can be obtained on request. Warranty does not cover suitability, fit for purpose or any consequential or related damages. Please review warranty in detail before using products.

Further Information

If you would like additional information please consult our Technical Advisory Team at the number listed below or visit our website to register your interest in specifying a Flowcrete flooring system.

Disclaimer: Any recommendation or suggestion relating to the use of the products made by Flowcrete North America, Inc., whether in its technical literature, or in response to a specific enquiry, or otherwise, is based upon data believed to be reliable, however the products and information are intended for use by Customers having requisite skill and know-how in the industry and therefore it is for the Customer to satisfy itself of the suitability of the products for its own particular use and it shall be deemed that the Customer has done so at its sole discretion and risk.



Flowcrete North America, Inc.
11133 I-45 South, Suite K
Conroe, Texas 77302
Tel: 936 539 6700 Fax: 936 539 6701
Email: usa@flowcrete.com
Flowcrete North America, Inc. is an RPM company

www.flowcreteamericas.com