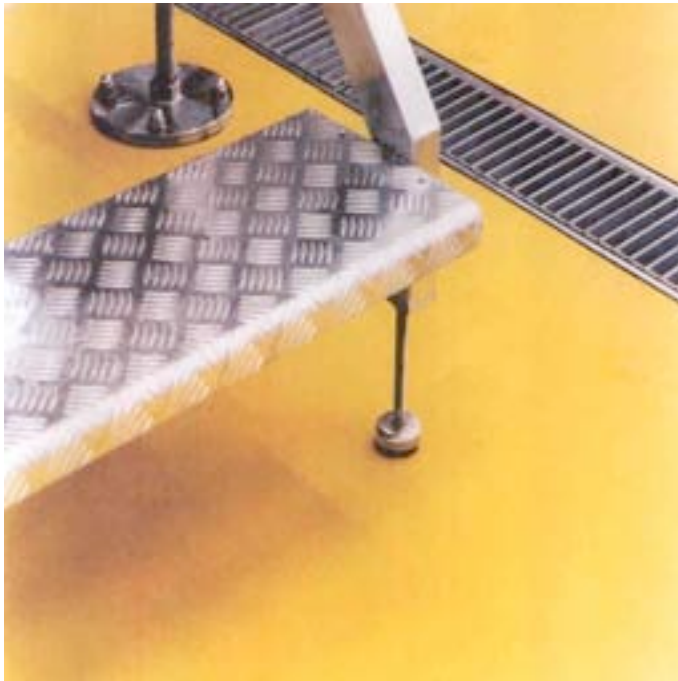




Cover-Clad® HF



Description

Cover-Clad HF is heavy duty, chemical resistant antimicrobial treated polyurethane resin floor topping. Cover-Clad HF provides a durable and fine textured floor finish.

Cover-Clad HF is based on over 30 years of polyurethane flooring technology.

Uses

HF is ideal for heavy processing areas such as food manufacturing, food preparation areas and chemical processing plants.

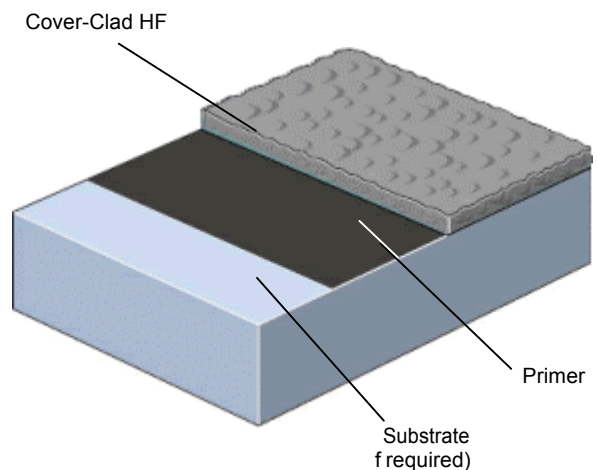
Benefits

- Contains Polygiene® antimicrobial additive
- Very high chemical resistance
- Easy to clean and sterilize anti-slip surface, minimal joints
- Heat resistant to 250 °F
- Steam cleanable
- Non tainting, non dusting
- High abrasion resistance
- Withstands high mechanical stress
- Good alternative to expensive acid tiles
- Low odor during application
- Positive slip resistance

Project References

Baxter, Nive Nunspeet, Fruttigel S.c.r.l., Masterfoods, Readi-Bake, HEB Foods, BAR S Meats, Coors Brewing, Kraft Foods, Cadbury, Heinz, Cott Beverage, Coca-Cola.

System Design



Standard color chart



Mid Gray



Red



Dark Gray



Khaki



Green



Cream



Blue



Black

The applied colors may differ slightly from the examples shown above. Contact our customer services for a true color sample or a special color.

Product Specification

Product: Cover-Clad HF

Finish: Matte

Preparatory work and application in accordance with suppliers instructions.

Supplier: U.S.Flooring CO, Inc.

Telephone : Customer Service 1800 527 3566

Installation Service

The installation should be carried out by a Cover-Clad preferred contractor with a documented quality assurance program. Obtain details of our preferred contractors by contacting our customer service team or enquiring via our web site www.usflooringinc.com

Products Included in this System

Topping: Cover-Clad HF - 66lb unit

- 24 sq ft/unit @ 1/4"
- 17 sq ft/unit @ 3/8"

Cover-Clad HF is a self-sealing finish.

Detailed application instructions are available upon request.

Primer

Under certain conditions, out-gassing of the concrete may cause surface defects in the finished Cover-Clad topping and priming of the concrete surface may be required.

Install a test patch in the area of concrete to determine if priming is necessary.

Flooring Design Service

Special corporate colors and designs can be produced to special order.

Polygiene: Microbial & Fungal Resistance

All Cover-Clad products include a built in high performance anti-microbial, Polygiene. This silver-based additive inhibits the growth of bacteria and molds and guards against product degradation and odors caused by these microorganisms. Detailed anti-microbial information and test results are available upon request.

Substrate Requirements

Concrete or screed substrate should have a minimum of 3,625 psi compressive strength, free from laitance, dust and other contamination. The substrate should be dry to ASTM requirements and free from excessive moisture vapor transmission.

Environmental considerations

The finished system is assessed as non-hazardous to health and the environment. The long service life and seamless surface reduce the need for repairs, maintenance and cleaning. Environmental and health considerations are controlled during manufacture and application of the products by Cover-Clad staff and fully trained and experienced contractors.

Technical Information

The figures that follow are typical properties achieved in laboratory tests at 68°F and at 50% Relative Humidity.

Compressive Strength	8,000 psi (ASTM C 579)
Tensile Strength	1,450 psi (ASTM C 307)
Coefficient of thermal expansion	1.1×10^{-5} in/in/°F (ASTM C 531)
Impact resistance	No visible damage or deterioration at minimum 160 in-lb
Flexural strength	2,900 psi (ASTM C 580)
Modulus of elasticity	1.7×10^5 (ASTM C 469)
Water absorption	< 0.1%
Abrasion Resistance	0.05 g loss (ASTM D 4060) CS-17 Wheel, 1,000 cycles
Adhesion	400 psi (ASTM D 4541) 100% concrete failure
Coefficient of friction	Passes ADA recommendations (ASTM D 2047)
Chemical resistance	Excellent resistance to sugars and most acids (organic and inorganic) Contact U.S.Flooring CO, Inc. for chemical resistance chart

Aftercare - Cleaning and Maintenance

Clean regularly using a rotary scrubber drier in conjunction with a mildly alkaline detergent.

Color Stability

Cover-Clad HF is not color fast and may change color over time (exhibits a yellowing effect). Color change depends on the UV light and heat levels present and hence, the rate of change cannot be predicted. This is more noticeable in light colors and grays, but does not compromise the product's chemical resistance or physical characteristics.

Important Note - Warranty

Cover-Clad's products are guaranteed against defective materials and manufacture and are sold subject to our standard Warranty, Terms and Conditions of Sale, copies of which can be obtained on request. Warranty does not cover suitability, fit for purpose or any consequential or related damages. Please review warranty in detail before using products.

Further Information

To ensure you are specifying a fit for purpose flooring system for your project please consult our Technical Advisors on the number below or visit our website to register your interest in specifying one of the most durable floors on the market.

Disclaimer: Any recommendation or suggestion relating to the use of the products made by U.S. Flooring CO, Inc., whether in its technical literature, or in response to a specific enquiry, or otherwise, is based upon data believed to be reliable, however the products and information are intended for use by Customers having requisite skill and know-how in the industry and therefore it is for the Customer to satisfy itself of the suitability of the products for its own particular use and it shall be deemed that the Customer has done so at its sole discretion and risk.

U.S. Flooring Inc.
1550 Katherine Ave
Joplin, MO 64804
Tel: 417 625 1512
Fax: 417 625 1707